



STATEMENT OF COMMUNITY CONSULTATION

20 May 2021

Contents

1. Introduction.....	2
2 The proposed Longfield Solar Farm	5
3 Developing our approach to consultation	7
4 Consulting the community.....	9
5. Consultation arrangements.....	21

1. Introduction

1.0.1 Longfield Solar Energy Farm Ltd is inviting feedback from the local community on its proposals for Longfield Solar Farm as part of a public consultation in line with the requirements of the Planning Act 2008.

1.1 What is this document?

1.1.1 This document, known as a Statement of Community Consultation ("SoCC"), sets out how we plan to consult with the local community. Feedback from this round of consultation will inform the final planning submission. It includes:

- A description of the planning process we must follow
- An outline of our proposals
- How we have developed our approach to consultation
- How we will be consulting the local community
- How we will publicise the consultation
- The consultation arrangements
- What we will do with feedback from the consultation
- Next steps and further information

1.2 Why are we publishing this document?

1.2.1 The proposed Longfield Solar Farm is classified as a Nationally Significant Infrastructure Project ("NSIP") under the Planning Act 2008. This means that, unlike planning applications, which are determined by local planning authorities, we must apply to the Secretary of State for Business, Energy and Industrial Strategy ("BEIS") for a Development Consent Order ("DCO") for our proposals.

1.2.2 Part of this process requires us to publish a statement of how we will consult with the local community – known as a SoCC. The consultation is an opportunity to influence our proposals before we submit our DCO application. We very much want feedback from the local community on our proposals as part of it.

1.4 The planning process

1.4.1 We are developing the proposed Longfield Solar Farm under the Planning Act 2008. This is because its proposed generating capacity exceeds 50 megawatts ("MW"), which means that, under the Planning Act 2008, Longfield Solar Farm constitutes a NSIP requiring a DCO.

1.4.2 Unlike planning applications, which are considered by local authorities, DCO applications are made to the Planning Inspectorate ("PINS"). This independent body administers the application process on behalf of the relevant Secretary of State. In this case, the appropriate government department is the Department for BEIS. Further information on the DCO application process can be obtained from PINS Advice Note 8: Overview of the nationally significant infrastructure planning process for members of the public and others. This is available on the PINS website at the following link: <https://infrastructure.planninginspectorate.gov.uk/wp-content/uploads/2013/04/Advice-note-8.0.pdf>

1.4.3 Figure 1 on page 4 of this document shows each stage of the planning process for NSIPs. We anticipate submitting our application in the final quarter of 2021.

1.4.4 There are a number of other NSIPs currently planned in Essex. Locally, these include the proposed A12 Chelmsford to A120 Widening Scheme. We are actively considering potential interactions with other NSIPs as we develop our proposals.

1.5 The Planning Act 2008 and consultation

1.5.1 DCOs are governed by a fixed, statutory process which requires us to consult with persons with an interest in the proposed land and certain bodies as prescribed under section 42 of the Planning Act 2008; the local community under section 47 of the Planning Act 2008; and to publicise the proposals locally and nationally under section 48 of the Planning Act 2008 and regulation 13 of the Infrastructure Planning (Environmental Impact Assessment) Regulations 2017 ("EIA Regulations"). It also provides a fixed role as consultees for those local authorities which host the development and means we will be following a well-established and clear process to develop our proposals.

1.5.2 We are at the stage in developing our proposals where we will formally consult to meet this requirement – this is known as a statutory consultation. We will use the feedback that we receive during the statutory consultation to help us develop our final proposals for Longfield Solar Farm before submitting our DCO application.

1.5.3 As part of our DCO application, we will submit a Consultation Report detailing our approach to consultation, the feedback that we received during the statutory consultation, and how we have had regard to it. When considering our DCO application, the Secretary of State must consider whether the consultation that we have undertaken has been adequate.

1.6. Environmental Impact Assessment

1.6.1 For the proposed Longfield Solar Farm, we are required to carry out an Environmental Impact Assessment ("EIA") of our proposals as part of the planning process. In legal terms, this means the proposed scheme is considered to be 'EIA development' for the purposes of the EIA Regulations.

1.6.2 This means we must assess the likely significant environmental effects of our proposals and where appropriate describe mitigation that is proposed to avoid, prevent, reduce or, if possible, offset any significant adverse effects. We will report on this process in a document called an Environmental Statement ("ES") when we submit our DCO application.

1.6.3 At this consultation stage, we will be sharing and seeking feedback on the preliminary results of our assessments. We will do so in a document called a Preliminary Environmental Information Report ("PEIR").

1.7 More information

1.7.1 You can find more information about the Planning Act 2008, PINS and its role and how to participate in the DCO process on the PINS National Infrastructure Planning website - <https://infrastructure.planninginspectorate.gov.uk/>, or by calling PINS on 0303 444 5000.



Figure 1: The planning process for NSIPs

2 The proposed Longfield Solar Farm

2.1 About us

2.1.1 Longfield Solar Energy Farm Limited is a joint venture between two companies with a long history in helping meet the country's need for renewable energy.

2.1.2 EDF Renewables has more than 25 years' worth of experience in delivering renewable energy projects in more than 20 countries around the world. In the UK, it provides much needed new affordable low carbon energy through 37 wind farms and one of the UK's largest battery storage units (together totalling almost 1GW). It has a portfolio of rooftop solar and grid scale solar energy generation in development.

2.1.3 Padero Solar has helped to develop more than 25 solar farms in the UK and this provides over 390MW of renewable energy. Padero Solar is part of a group of three companies. These include PS Renewables, which is behind a number of solar projects, and PSH Operations, an Operations & Maintenance business managing over 1.3GW of solar farm assets in the UK.

2.1.4. You can find out more at their websites: <https://www.edf-re.uk/> and <http://paderosolar.com/>

2.2 Longfield Solar Farm

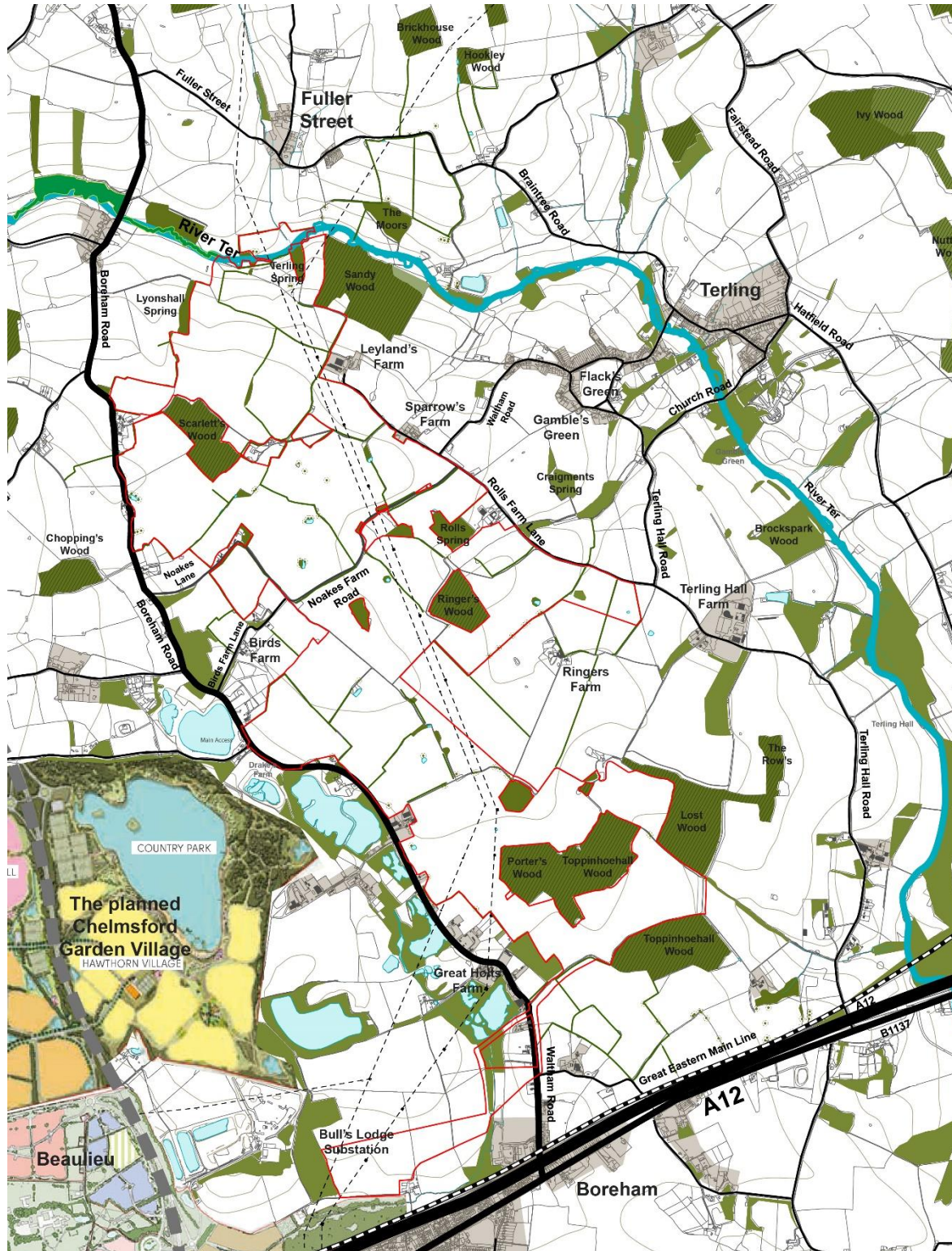
2.2.1 Longfield Solar Farm is a proposed new solar energy farm, co-located with battery storage. The proposals include grid infrastructure to connect Longfield Solar Farm to the National Grid and any necessary and appropriate environmental mitigation. It is located in the local authority areas of Braintree District Council, Chelmsford City Council and Essex County Council.

2.2.2 We will also seek development consent for the infrastructure needed to build and maintain Longfield Solar Farm, such as construction compounds and site offices. We will apply in the DCO application for ancillary powers such as road/traffic management powers required in construction and, potentially, compulsory acquisition powers for land and/or rights.

2.2.3 We have secured a grid connection agreement for the scheme, which would allow us to export or import up to 500MW of electricity to and from the National Grid.

2.2.4 Further details of the proposed Longfield Solar Farm will be included in materials published as part of the consultation. Details of the materials that we will publish are set out in the 'Consulting the community' section below.

Figure 2: Scheme boundary (shown in red)



Alexander House - 1 Mandarin Road - Rainton Bridge Business Park - Houghton le Spring - DH4 5RA
Registered Company No. 11618210 - longfieldsolarfarm.co.uk

3 Developing our approach to consultation

3.1 We have undertaken early engagement with stakeholders to develop our approach to community consultation.

3.2 This has included meeting with officers and members at the local authorities that the proposed Longfield Solar Farm is located within, relevant statutory advisers, potentially affected land interests, parish councils, and relevant members of Parliament. We also conducted a period of non-statutory consultation between 2 November 2020 and 14 December 2020.

3.3 Due to the COVID 19 pandemic, the consultation took place remotely. We used a range of techniques to ensure that the community could find out more and respond; these included issuing a booklet and consultation questionnaire to local addresses by post, a virtual exhibition, webinars and one-to-one phone meetings. We considered feedback from the host local authorities in developing our approach to non-statutory consultation. Through the non-statutory consultation, we invited feedback on our early proposals for Longfield Solar Farm, our approach to environmental impact assessment, and our approach to consultation.

3.4 We are grateful to everyone who took part in the non-statutory consultation. We received more than 240 responses overall, both through the consultation questionnaire issued by post and online. The consultation was a useful opportunity to develop remote consultation techniques such as webinars, one-to-one phone meetings and virtual exhibitions which we are using as part of this consultation. Materials from the non-statutory consultation will continue to be available at our website, www.longfieldsolarfarm.co.uk, during the current round of consultation.

3.5 We are required by section 47(2) of the Planning Act 2008 to consult with host authorities as defined by section 43(1) of the Planning Act 2008 on the development of this SoCC. We consulted these authorities between 10 March and 9 April 2021. Table 1 below summarises feedback from this consultation and our responses to it.

Table 1: summary of feedback from SoCC consultation

Feedback	Our response
The start of the consultation period should be delayed until after the local elections on 6 May 2021.	We have amended the SoCC so that the consultation will start no earlier than 20 May 2021.
The Introduction should set out the context for development and the planning process clearly, including how the project relates to other NSIPs.	We have updated the Introduction in line with this advice.
Electronic mapping should be clear and allow readers to enlarge it, as well as show local context such as settlement names.	Figures 2 and 3 have been updated in response to this comment.

Feedback	Our response
The SoCC should set out more detail on how the non-statutory consultation informed the current round of consultation.	We have added further detail on this point in section 3.
The SoCC should provide more detail on how the consultation will engage with seldom heard groups.	We have added further detail on the way the consultation will engage with seldom heard groups. This includes adding a list of consultees and further detail on how consultation materials will be accessible.
Hard copies of documents should be sent to parish councils and district councils in Zone 1 so that they are available locally.	Subject to Government guidance on COVID 19, we hope to make documents available on deposit in public buildings in the local area. We have included further details of this in sections 4 and 5.
Consultees should be able to comment on socio-economic and cumulative impacts from development, proposed mitigation, and ways to maximise the benefits of development.	These are included in the scope of consultation set out in section 4.
The SoCC should state that consultation materials will make clear which aspects of the development proposals may be fixed and which can be influenced.	This is set out in section 4.
Subject to Government guidance on COVID 19, the project should consider use of static displays at local shopping and community centres.	We will consider the use of static displays at relevant local venues if permitted by Government guidance on COVID 19.
The use of an interactive map on the website, referencing points of interests and tags to more information, would help convey technical information in a more user-friendly way.	We are producing a 3D model and flythrough as part of the consultation. This will help provide technical information in a user-friendly way as referenced in the comment.

4 Consulting the community

4.1 We are inviting the community living in the vicinity of the proposed Longfield Solar Farm to take part in the statutory consultation and provide feedback on our developed proposals. This is to ensure that those people potentially affected by our proposals have the opportunity to understand them, provide their views and further influence the scheme's design.

4.2 Consulting during the COVID 19 pandemic

4.2.1 We are consulting at a time when the ongoing COVID 19 pandemic means there are restrictions on holding public meetings and events. While the Government has now announced a roadmap for ending the current restrictions, the dates in this are not fixed. The timing of the end of restrictions will depend on four tests set by the Government in its *COVID-19 Response: Spring 2021*.

4.2.2 We are aware of how important it is to make sure that anyone in the community who wants to find out more or share their views on the proposals can do so, as well as to provide certainty about how we will consult. We have developed a consultation programme designed to allow people from across the community to respond which is also compatible with different levels of social distancing requirements. As such, this document sets out a variety of different ways for local people to find out more information and provide feedback.

4.2.3 In preparing our approach to consultation, we have considered Government guidance on COVID 19: www.gov.uk/coronavirus. We have also considered advice from the local authorities where the proposed Longfield Solar Farm is located, the results of non-statutory consultation, and best practice guidance such as the National Infrastructure Planning Association's paper *Development Consent Orders and the Coronavirus Pandemic* (21 April 2020).

4.2.4 It is possible that the Government's advice regarding the COVID 19 pandemic may change during the consultation on our proposals or between the publication of this document and the beginning of the consultation. We have therefore set out below how we will respond to any changes in Government guidance on COVID 19 which take place during the consultation period.

4.3 Timing

4.3.1 To allow for the local government elections on 6 May 2021, the consultation will start no earlier than 20 May 2021. It will last for a minimum of six weeks from the start of the consultation period. The final consultation dates will be included in the consultation materials.

4.4 What will be consulted on?

4.4.1 During the statutory consultation, we will be asking for views on:

- The proposed Longfield Solar Farm
- The short term and long-term impacts of the proposed Longfield Solar Farm including:
 - Construction impacts

- Environmental impacts
- Operational impacts
- Impacts from decommissioning
- Other impacts in this period, such as socioeconomic and cumulative impacts.
- Proposed mitigation of these impacts
- The contribution that Longfield Solar Farm could make to the local community
- The PEIR

4.5 Who will we consult?

4.5.1 We will consult widely in accordance with this SoCC and encourage participation in the consultation from any person or group who may be directly impacted by the proposed Longfield Solar Farm. We have defined a series of 'zones of consultation' for the purpose of consulting with the local community under section 47 of the Planning Act 2008.

4.5.2 These recognise the fact that levels of potential impact and interest are likely to vary with geography and inform the techniques we will use to consult. These zones are set out in Table 2.

Table 2: zones of consultation

Zone	Parameters
Zone 1	<p>Any person or group likely to be directly impacted by the proposed Longfield Solar Farm by virtue of their living or working in proximity to the site.</p> <p>This zone is defined by the boundaries of the parishes of Boreham, Fairstead, Great and Little Leighs, Hatfield Peverel, Little Waltham and Terling as shown in Figure 3 below.</p>
Zone 2	<p>People living and working in the host local authority areas of Braintree District Council, Chelmsford City Council and Essex County Council outside of consultation zone 1.</p>
Zone 3	<p>Neighbouring districts within the administrative areas of:</p> <ul style="list-style-type: none"> ● Colchester Borough Council ● Maldon District Council ● Rochford District Council ● Basildon Borough Council ● Brentwood Borough Council ● Epping Forest District Council ● Uttlesford District Council

Zone	Parameters
	<ul style="list-style-type: none"> • South Cambridgeshire District Council • West Suffolk Council • Babergh District Council • Mid Suffolk District Council <p>Neighbouring counties and unitary authorities within the administrative areas of:</p> <ul style="list-style-type: none"> • Suffolk County Council • Hertfordshire County Council • Cambridgeshire County Council • London Borough of Enfield • London Borough of Waltham Forest • London Borough of Redbridge • London Borough of Havering • Medway Council • Southend on Sea Borough Council • Thurrock Council

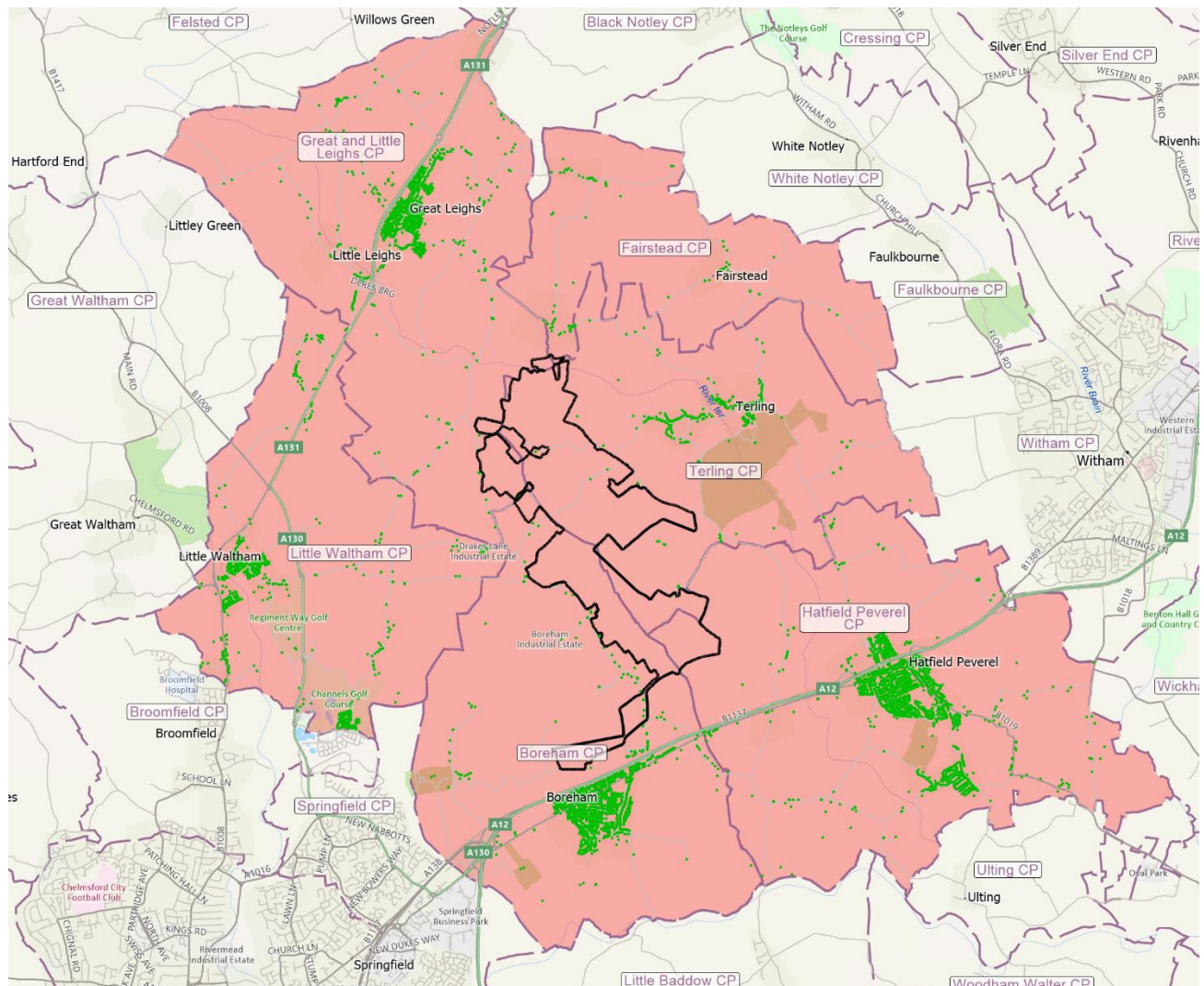


Figure 3: Consultation zone 1. The site boundary is shown in black.

4.5.3 We will also consult and continue our engagement with a range of statutory consultees as set out by section 42 and section 48 of the Planning Act 2008 and regulation 13 of the EIA Regulations, and additional organisations that we recognise to have an interest in the proposed Longfield Solar Farm. These groups include:

- Economic interest groups and organisations such as local enterprise partnerships (LEPs) and chambers of commerce
- Heritage consultees including Historic England and the National Trust
- Environmental consultees including Natural England and the Environment Agency
- Infrastructure providers such as Highways England and National Grid
- Conservation groups such as the RSPB, CPRE Essex, Essex Wildlife Trust and the Ramblers

4.6 How will we be consulting?

4.6.1 We will use a range of techniques to consult the community. These are designed to allow people with different needs across the community to take part in the consultation in a way that is convenient to them while complying with Government guidance on COVID 19. These are set out in Table 3 overleaf.

Table 3: consultation techniques and publicity

Zone	How we will publicise consultation within this zone	How we will consult within this zone
1	<ul style="list-style-type: none"> • Writing to all addresses within consultation zone 1 • Writing to elected representatives at a parish, district, county and Parliamentary level, as well as community groups, within the zone with details of the consultation • Sharing a consultation information pack including Q&As and a poster with local authorities, parish councils and community groups within the zone to allow them to promote the consultation through existing communications channels • Publicising the consultation in the following newspapers circulating in the consultation zone: the Chelmsford Weekly News, Essex Chronicle and Braintree and Witham Times • Publicising the consultation to regional and local broadcasters including BBC Radio Essex, BBC Look East • Advertising the consultation online • Publishing details of the consultation online at www.longfieldsolarfarm.co.uk 	<ul style="list-style-type: none"> • Sending a copy of a consultation booklet providing a non-technical overview of the proposed Longfield Solar Farm, the EIA process, the consultation and planning process, how to take part in the consultation, and proposed next steps to all addresses in consultation zone 1 • Inviting enquiries and responses online through the consultation website, by freephone, freepost or email. This will provide a variety of means for consultees to respond in a way convenient to them • Hosting a virtual public exhibition on the consultation website • Hosting webinars which will include a presentation regarding the proposals and an opportunity to ask questions. Dates for the webinars are included later in this document and will also be made available in consultation publicity • Inviting elected representatives to take part in briefings through a digital meeting • Inviting residents of consultation zone 1 to book an individual appointment to discuss the proposals by telephone or, if Government guidance on COVID 19 permits, in person at an appropriate venue • Contacting community and voluntary organisations within consultation zone 1 to offer direct engagement • Publication of consultation information online at the consultation website • Provision of copies of the Preliminary Environmental Information Report for review, as well as copies of the consultation booklet and questionnaire, at deposit points in the local area if permitted by Government guidance

Zone	How we will publicise consultation within this zone	How we will consult within this zone
2	<ul style="list-style-type: none"> • Writing to all district and county councillors at Braintree District Council, Chelmsford City Council and Essex County Council • Writing to all parish councils within the consultation zone • Sharing a consultation information pack designed to support stakeholders promoting consultation through their own existing communication channels such as social media feeds with local authorities, parish councils and community groups within the zone • Publicising the consultation in the following newspapers circulating in the consultation zone: the Chelmsford Weekly News, Essex Chronicle and Braintree and Witham Times • Publicising the consultation to regional and local broadcasters including BBC Radio Essex, BBC Look East • Advertising the consultation online • Publishing details of the consultation online at www.longfieldsolarfarm.co.uk 	<ul style="list-style-type: none"> • Hosting webinars which will include a presentation regarding the proposals and an opportunity to ask questions. Dates for the webinars are included later in this document and will also be made available in consultation publicity • Hosting a virtual exhibition on the consultation website • Inviting elected representatives to take part in briefings through a digital meeting • Publication of consultation information online at the consultation website • Inviting enquiries and responses online through the consultation website, by freephone, freepost or email

Zone	How we will publicise consultation within this zone	How we will consult within this zone
3	<ul style="list-style-type: none"> • Writing to the Leader and Chief Executive of local authorities within the zone • Publicising the consultation in the East Anglian Daily Times • Advertising the consultation online • Publishing details of the consultation online at http://www.longfieldsolarfarm.co.uk/ 	<ul style="list-style-type: none"> • Publication of consultation information online at the consultation website • Hosting a virtual exhibition on the consultation website • Hosting webinars which will include a presentation regarding the proposals and an opportunity to ask questions. Dates for the webinars are included later in this document and will also be made available in consultation publicity • Inviting enquiries and responses online through the consultation website, by freephone, freepost or email

4.7 Changes to consultation arrangements

4.7.1 These consultation techniques have been developed to comply with the current COVID 19 alert level set by the Government. At the time of publication, this is Level 3 – a COVID 19 epidemic is in general circulation.

4.7.2 We recognise that, should social distancing restrictions be lifted in line with the earliest timetable that was set out by the Government on 22 February 2021, it is likely that the alert level will change during the consultation period. However, it is also important to provide certainty to consultees about how they will be consulted.

4.7.3 If the alert level is changed to Level 1 or 2, which would mean the Government considers the number of COVID 19 cases to be lower, we will consider holding in-person engagement at physical locations on a voluntary basis, over and above the requirements of this SoCC. The nature and type of this activity would depend on the degree to which restrictions had been lifted.

4.7.4 In the event that we hold engagement in person at physical locations, we will publicise the engagement using the methods outlined below. In writing to consultees, we will provide two weeks' notice of any events.

4.7.5 The holding of public events would require time to organise and therefore we would continue to assess whether it will be possible to undertake these activities up until 28 days before the scheduled close of consultation, after which date there would be insufficient time to organise and publicise events or deposit locations within the consultation period. If the alert level remained at 3 or higher on this date, we would not consider it possible to deliver this additional voluntary activity within the consultation period.

4.7.6 We will publicise changes in consultation arrangements to accommodate additional voluntary activity made possible by a change in the COVID 19 threat level by:

- Writing to all addresses, elected representatives, parish councils and community groups within consultation zone 1
- Issuing a poster to elected representatives, parish councils and community groups for local display
- Writing to all district and county councillors at Braintree District Council, Chelmsford City Council and Essex County Council (zone 2)
- Writing to all parish councils within consultation zone 2
- Publicising the change of arrangements in the Chelmsford Weekly News, Braintree and Witham Times, Essex Chronicle and East Anglian Daily Times
- Publicising the change of arrangements online

4.7.7 Depending on the outcome of the consultation, we may conduct further, targeted, consultation on a voluntary basis – for example, should there be a material change in the proposals or should substantial new issues arise.

4.8 Consultation information

4.8.1 We will produce a range of materials providing information as part of the consultation including:

- A consultation booklet providing a non-technical overview of the proposed Longfield Solar Farm including key plans, the EIA process, the consultation and planning process, proposed next steps, and how to find out more and view other consultation documents
- A virtual exhibition setting out information about the proposals and how to take part in the consultation
- Presentations to be given as part of webinars
- The PEIR, accompanied by a non-technical summary
- A consultation questionnaire designed to collect responses to the consultation
- The SoCC

4.8.2 The PEIR will also incorporate the results of the environmental surveys that we have completed to date and set out our preliminary conclusions on the likely significant effects of the proposed Longfield Solar Farm on the environment. It will also give information about some of the measures that may be proposed to reduce or avoid those effects, so as to assist respondents in making well-informed responses to the consultation.

4.8.3 Copies of consultation information will be made available for review free of charge online at www.longfieldsolarfarm.co.uk/downloads/ and, should it become possible as outlined above, at public deposit points.

4.8.4 Hard copies of the consultation booklet, questionnaire and SoCC will also be made available free of charge on request. Copies of the PEIR will also be made available on USBs free of charge on request. A charge of £0.35 per page will be applicable for hard copies of the PEIR and its non-technical summary.

4.8.5 Consultation materials will include guidance on what respondents can influence through the consultation and how we will have regard to their responses.

4.9 Collection of responses

4.9.1 To capture participants' feedback, we will produce a consultation questionnaire inviting comments on the different elements of the proposed Longfield Solar Farm. The questionnaire will be made available by direct mail to people living in consultation zone 1, online through the proposed Longfield Solar Farm website, www.longfieldsolarfarm.co.uk, and on request.

4.9.2 Consultees will be able to respond by completing the questionnaire online or returning the completed questionnaire using the contact details set out in this document during the consultation period.

4.9.3 Alternatively, consultees can write to us via email or post at the addresses on pages 22-3. Pre-addressed Freepost envelopes will be made available on request using the contact details set out on pages 22-3.

4.10 Seldom heard audiences

4.10.1 It is important to ensure that consultation is inclusive and enables participation from a wide range of audiences, including those who are seldom heard in public consultation such as people without internet access, seasonal workers and socially isolated people. We will do this by:

- Holding webinars at a variety of times, including evenings and weekends, to enable participation by people with different time commitments and making recordings of webinars available afterwards.
- Making provision for people who do not have access to the internet through the consultation programme. This will include sending a copy of the consultation booklet and consultation questionnaire to every address in consultation zone 1, proactively offering meetings by telephone to people living in consultation zone 1 and making hard copies of consultation materials available as set out above.
- Choosing accessible venues for public information points or in-person engagement if these are to be utilised.
- Providing materials in alternative formats such as Braille on request. Details of how to request materials in alternative formats will be published at www.longfieldsolarfarm.co.uk and in the consultation booklet.
- Conducting an accessibility check of consultation materials prior to publication.
- Contacting community and voluntary organisations including parish councils and schools within consultation zone 1 to offer direct engagement and sharing a consultation information pack designed to support them in promoting consultation through their own existing communication channels such as social media feeds.
- Providing a variety of communications channels including a Freephone number, email address and Freepost address for those seeking information.

4.11 Groups we will seek to contact as part of the consultation include:

- | | |
|---|--------------------------------------|
| • Active Essex | • Chelmsford Retirement Action Group |
| • Age UK Essex | • Collaborate Essex |
| • Chelmsford Area Access Group | • Essex Access Forum |
| • Chelmsford Association of Voluntary Care Groups | • Essex Community Foundation |
| | • Essex CVS |

- Essex Sight
- Healthwatch Essex
- Hearing Help Essex Ltd
- U3A Essex
- Young Essex Assembly

5. Consultation arrangements

5.1 How to take part in the consultation

5.1.1 Consultees can find out more by:

- Contacting us on 08081687925 or info@longfieldsolarfarm.co.uk
- Viewing a series of webinars we will give about the proposals online. These will offer the opportunity to ask questions about the proposals. These will include webinars taking place at 1400 on 5 June 2021 and 1900 on 10 June 2021. Details of how to register will be published at www.longfieldsolarfarm.co.uk
- We will publish details of any additional webinars at www.longfieldsolarfarm.co.uk, as well as informing local elected representatives and parish councils in consultation zone 1
- Viewing a virtual public exhibition on our website, www.longfieldsolarfarm.co.uk, which will be available to view at any time between the beginning and end of the consultation period.
- Booking an appointment to speak with members of the project team about our proposals individually. You can book an appointment using the contact details provided below. When booking appointments, we will ask for specific areas of interest to match the caller with a specialist member of the project team for their appointment.
- Reading a booklet summarising our proposals. We will send a copy of the booklet to all addresses in consultation zone 1. The booklet will also be available from our website, www.longfieldsolarfarm.co.uk, and on request.
- Reviewing the PEIR and other consultation documents by going to our website, www.longfieldsolarfarm.co.uk. Subject Government guidance on COVID 19, we plan to make the consultation documents are also available to view at following locations in the local area:
 - Hatfield Peverel Library, The St, Hatfield Peverel, Chelmsford CM3 2DP
 - Witham Library, 18 Newland St, Witham CM8 2AQ
 - Chelmsford Library, Chelmsford County Hall, Market Rd, Chelmsford CM1 1QH
- If this is possible, details of how to view documents at these locations will be included in the consultation booklet and at www.longfieldsolarfarm.co.uk. Hard copies of consultation documents will also be available on request. A charge of £0.35 per page will be applicable for hard copies of the PEIR and its non-technical summary.

5.2 Responding to the consultation

5.2.1 We welcome feedback on our proposals for Longfield Solar Farm. Anyone can share their views by:

- Completing a consultation questionnaire online at www.longfieldsolarfarm.co.uk
- Returning a questionnaire to Longfield Solar Farm consultation, FREEPOST reference RTRB-LUJJ-AGBY, c/o SEC Newgate UK, Sky Light City Tower, 50 Basinghall Street, London, EC2V 5DE or info@longfieldsolarfarm.co.uk
- Submitting their comments by email to info@longfieldsolarfarm.co.uk or in writing to the above Freepost address.

5.2.2 Responses must be received in writing by the consultation deadline of 23:59 on the advertised closing date of the consultation.

5.2.3 Responses must be individual. Petitions will be treated as a single response for the purpose of the Consultation Report.

5.3 How we will consider the responses

5.3.1 Following the statutory consultation, we will consider all the views that we receive and continue to develop our design for the proposed Longfield Solar Farm ahead of submitting our DCO application to the Secretary of State. Our DCO application will include a Consultation Report, which will set out how we have consulted, summarise responses and key issues raised, and set out how we have had regard to all responses received.

5.3.2 Any comments received will be analysed by Longfield Solar Energy Farm Ltd and any of its appointed agents. Copies may be made available in due course to the Secretary of State, the Planning Inspectorate and other relevant statutory authorities so that feedback can be considered as part of the DCO process. We will request that any personal details are not placed on public record and will be held securely by Longfield Solar Energy Farm Ltd and its agents in accordance with the data protection law and will be used solely in connection with the consultation process and subsequent DCO application and, except as noted above, will not be passed to third parties.

5.3.3 The Planning Inspectorate has also published details of how it manages comments received in a Privacy Notice available on its website:

https://assets.publishing.service.gov.uk/government/uploads/system/uploads/attachment_data/file/879604/Privacy_Note_Final_15042020.pdf

5.4 Further information

5.4.1 For further information, please contact us by:

- Visiting the proposed Longfield Solar Farm website: www.longfieldsolarfarm.co.uk
- Calling 08081687925 (9:00am to 5:00pm, Monday to Friday)

Alexander House - 1 Mandarin Road - Rainton Bridge Business Park - Houghton le Spring - DH4 5RA
Registered Company No. 11618210 - longfieldsolarfarm.co.uk

- Emailing info@longfieldsolarfarm.co.uk
- Writing to the project team at: Longfield Solar Farm consultation, FREEPOST reference RTRB-LUJJ-AGBY, c/o SEC Newgate UK, Sky Light City Tower, 50 Basinghall Street, London, EC2V 5DE